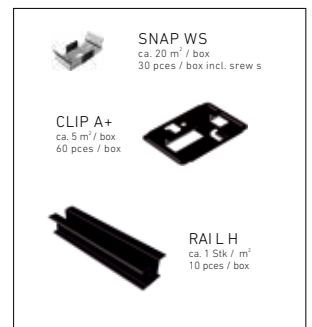
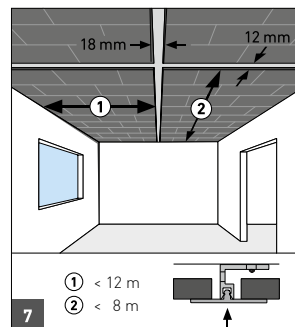
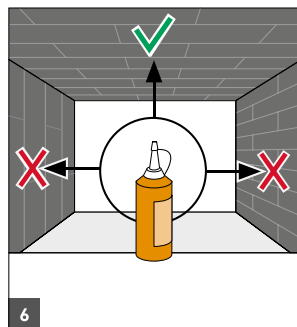
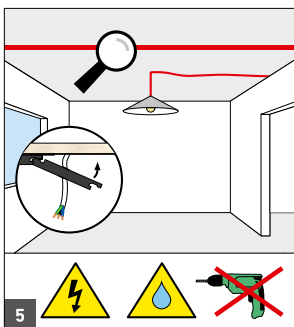
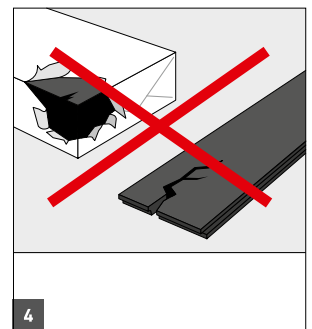
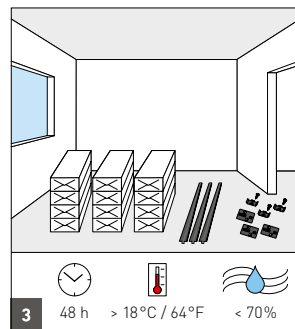
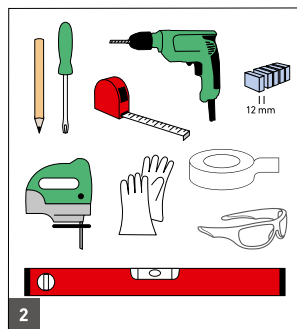
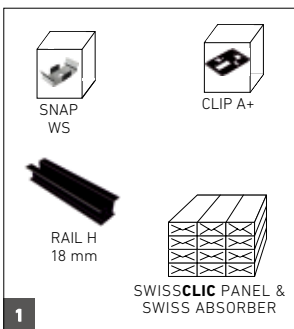
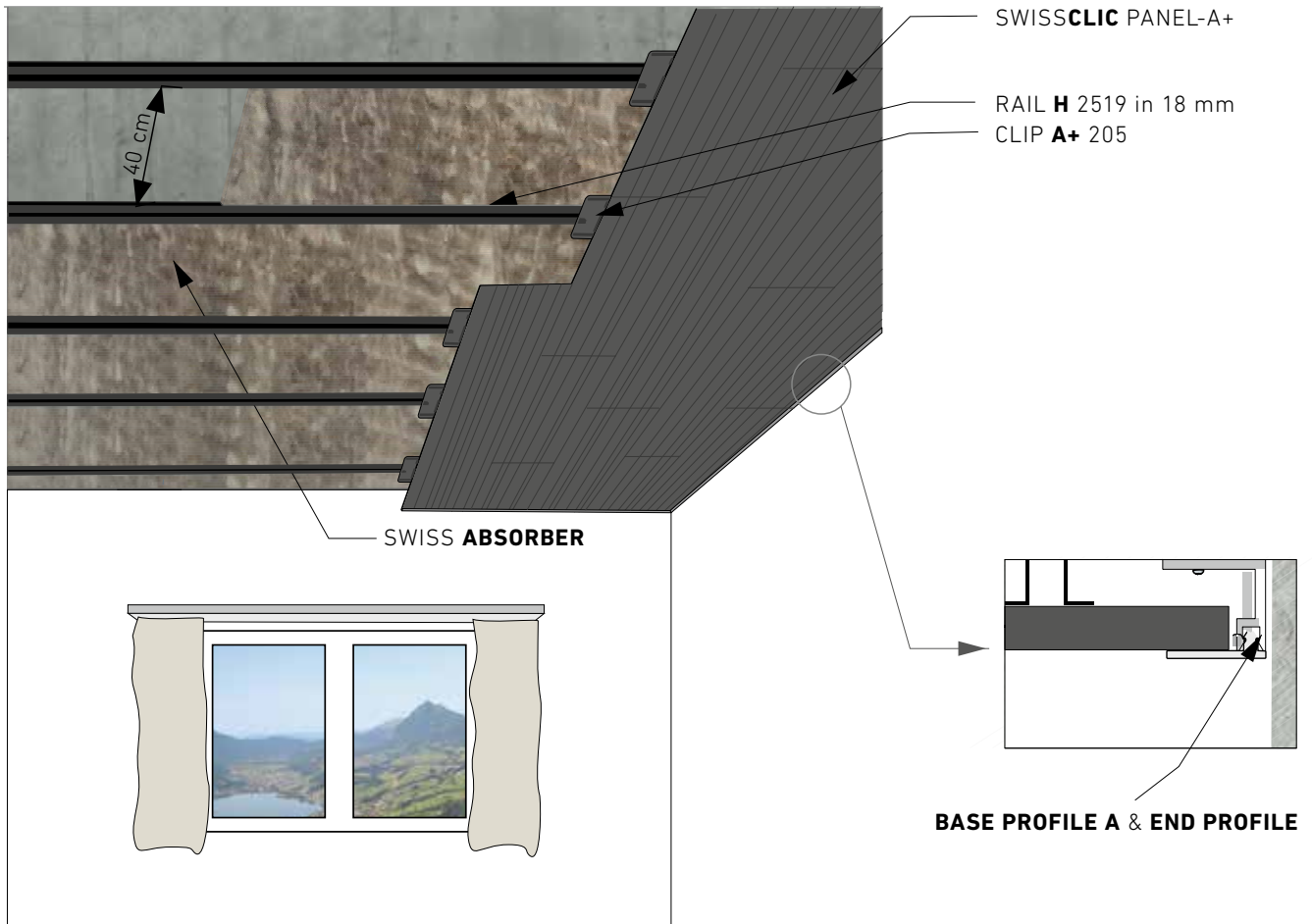
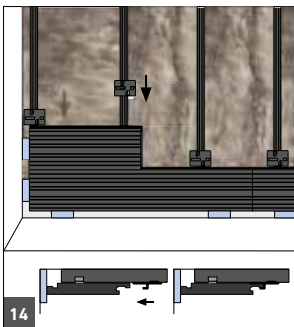
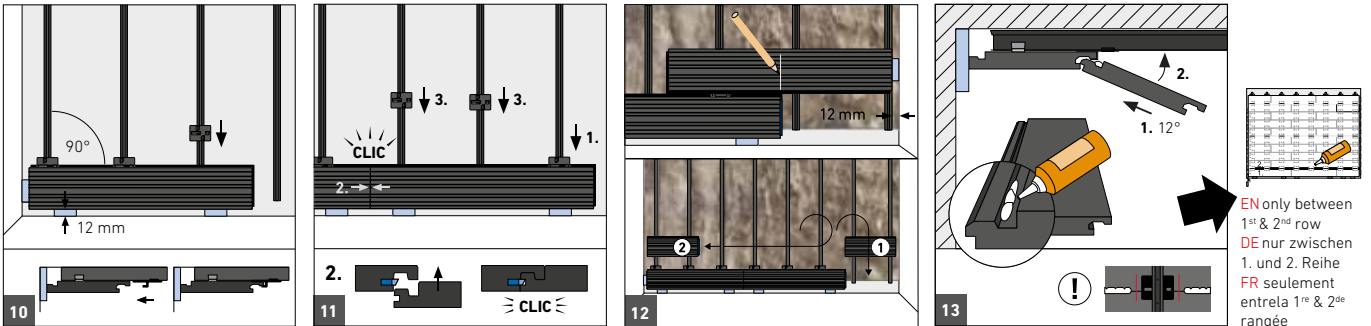
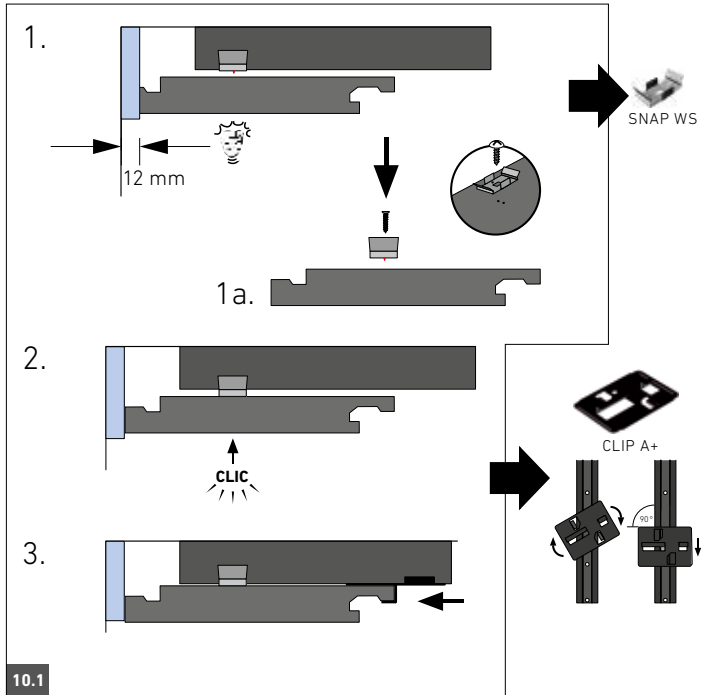
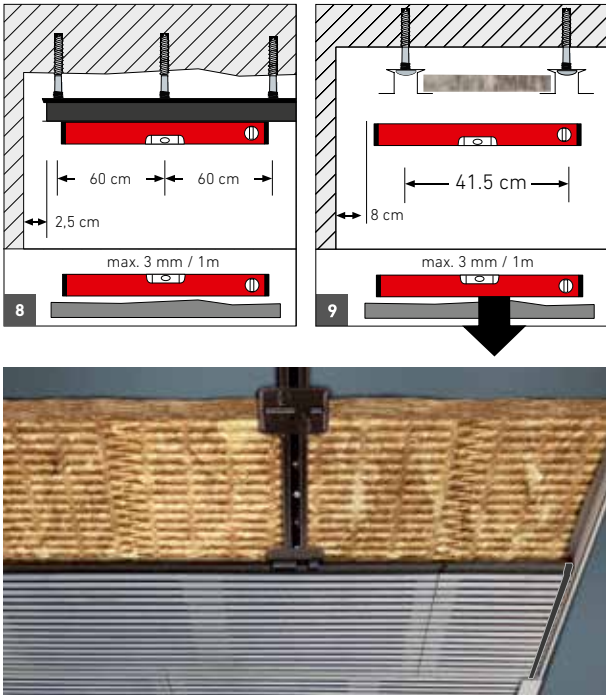


INSTALLATION GUIDE | VERLEGEANLEITUNG

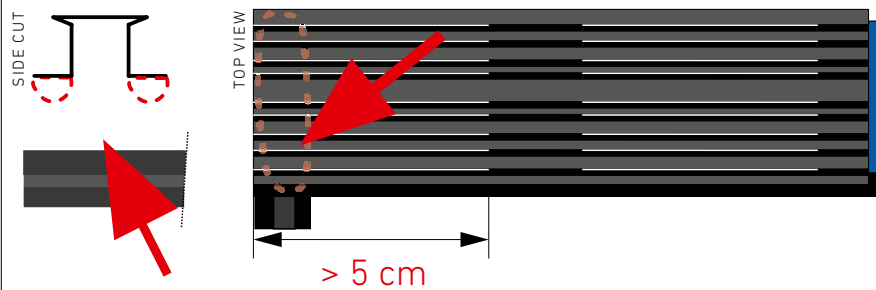
SWISSCLIC PANEL-A+ WITH RAILS SYSTEM



START



FOR INSTALLATION WITHOUT BASE & END PROFIL



EN
 If the distance is > 5 cm = put **elastic silicon glue** between SWISS**CLIC** PANEL and the RAIL subconstruction to hold the small lamellas.

DE
 Bei > 5 cm Distanz zum Steg = Setze **elastischen Silikonkleber** zwischen das SWISS**CLIC** PANEL und die RAIL Unterkonstruktion um die schmalen Lamellen zu halten.

FR
 Pour une distance de > 5 cm jusqu'à la traverse = Mettez une **colle elastique silicone** entre le SWISS**CLIC** PANEL et le RAIL de sous-construction pour fixer les minces lamelles.

END

